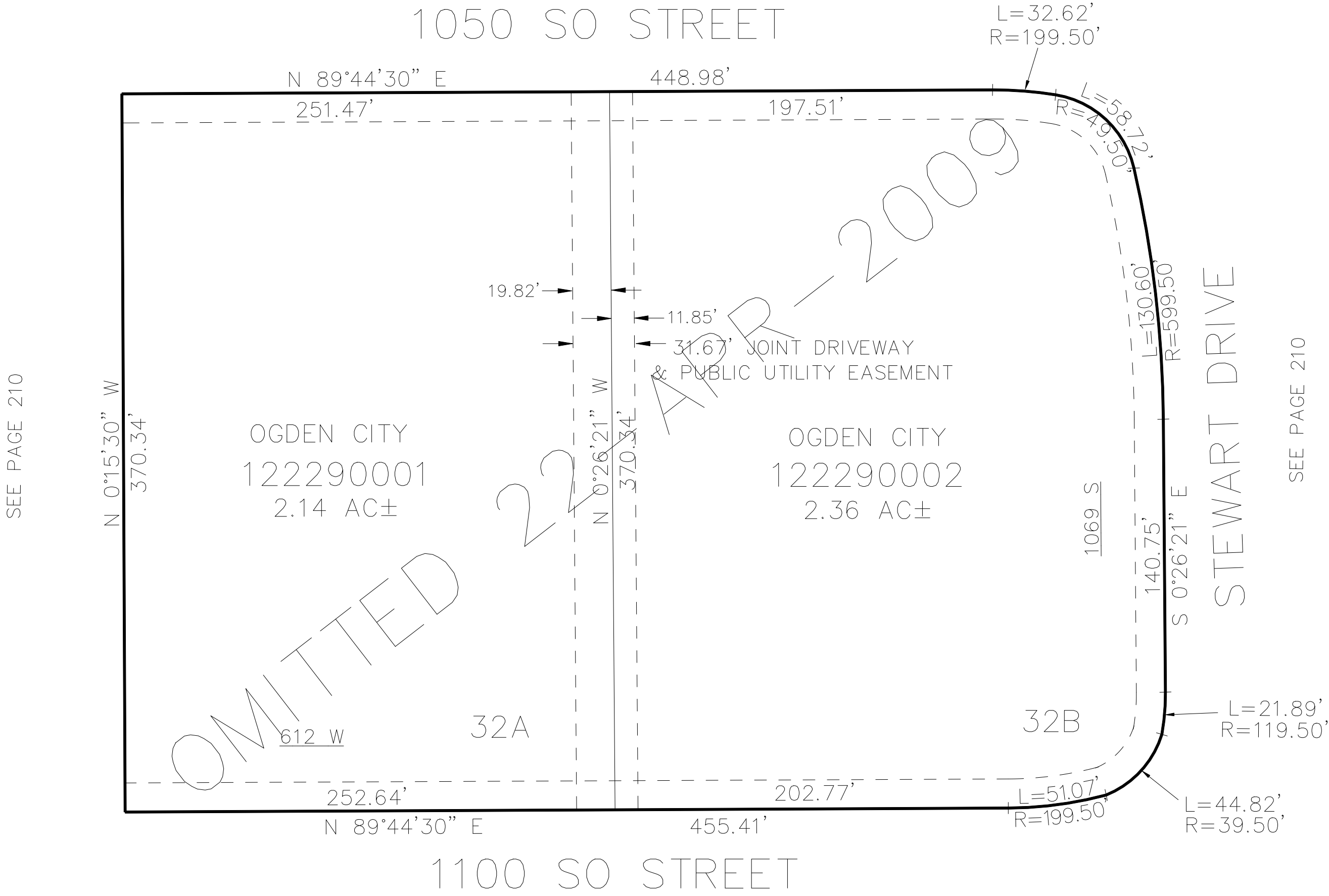


PART OF THE NE1/4, OF SECTION 19, T.6N., R.1W., S.L.B. & M.  
BUSINESS DEPOT OGDEN – PLAT 13 LOT 32 1ST AMENDMENT

TAXING UNIT: 359

IN OGDEN CITY  
SCALE 1" = 50'

SEE PAGE 210



10' UTILITY & DRAINAGE EASEMENTS EACH  
SIDE OF PROPERTY LINES AS INDICATED  
BY DASHED LINES EXCEPT AS OTHERWISE  
SHOWN.

FOR COMPLETE ENG DATA SEE  
ORIGINAL DEDICATION PLAT IN  
BOOK 68, PAGE 16 OF RECORDS.